

More!

InfraCAM™



NEW! InfraCAM SD model with...

- **More** images (storage of 1,000 on SD card)
- **More** image quality (0.12°C NETD)
- **More** ease of use

* Now new powerful "QuickReport" software included!



Detect hidden faults



Make quick inspections



Prevent damage

InfraCAM™, find hidden faults in electrical installations fast

Locate problems fast

In production plants, office facilities, hospitals or hotels, the InfraCAM instantly makes hot spots visible on a clear thermal image prior to failure. Detect the problem area and repair it before real problems occur. Common electrical targets are fuses, electrical panels, bolted connections and switchgear.

Work safely and see temperatures

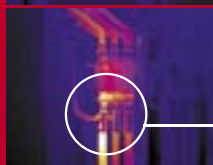
The InfraCAM allows you to measure the temperature of any object you are looking at in a non-contact mode, without putting yourself in danger. A crosshair or an area in the thermal image allows you to measure either the point value or the max or min value. Detect the most diverse electrical problems instantaneously by seeing them on a thermal image.

Document your work

InfraCAM stores 1,000 images in standard JPEG format. Insert your images directly in to e-mail, Word® or PowerPoint®. The images are also compatible with all of FLIR's more advanced software. This enables you to use all images, cameras and software together.



Avoid fires



Avoid unplanned shut-downs



Find the faults faster



Verify repairs



Evaluate new installations



Easy-to-use

InfraCAM is lightweight and ergonomically designed for industrial environments. The camera with the one-hand grip is intuitive to operate. You simply point, shoot and capture your IR images.



Image Quality

Now with improved sensitivity (0.12 NETD). See smaller temperature differences and get sharper images on the large LCD and in the reports.



Image storage

Now with SD card that stores up to 1,000 infrared images. Move standard JPEG images to a computer without cables.



Faster to measure

Now even easier to use with the "Area min-max function" that instantly finds the hottest or coldest temperature of a target and eliminates the risk of missing key information.



QuickReport software

Powerful, easy-to-use software for downloading images, making analysis and reports.

Technical specifications

Imaging performance

Field of view	25° x 25°
Minimum focus distance	0.12 m
Detector type	Focal Plane Array (FPA), uncooled microbolometer, 120 x 120 pixels
Focus	Manual

Image presentation

Display	3.5" color LCD, 16K colors
---------	----------------------------

Measurement

Temperature range	-10°C to +350°C
Accuracy	±2°C, ±2% of reading
Thermal sensitivity / NETD	0.12°C at 25°C
Measurement mode	Spot in the middle, Area min. and max.
Menu controls	Palettes (color or black and white), auto-adjust (automatic/manual)
Set-up controls	Date/time, language, power down, display intensity
Measurement corrections	Emissivity variable from 0.1 to 1.0

Image storage

Type	1,000 images. Removable SD Card (128 Mbyte included)
File formats	Standard radiometric JPEG

Laser locatIR

Classification	Class 2
Type	Semiconductor AlGaInP Diode Laser:1mW/635 nm red

Battery system

Operating time	7 hours continuous operation. Display shows battery status
Charging system	In camera, AC adapter
AC operation	AC adapter 90-260 V AC, 50/60 Hz
Input voltage	11-16 V DC

Environmental specification

Operating temperature range	-15°C to +50°C
Encapsulation	IP54

Physical characteristics

Weight	550 g
Size (L x W x H)	243 mm x 81 mm x 103 mm

Interfaces

USB	Image transfer to PC
-----	----------------------

InfraCAM includes:

IR camera, Carrying case, Power supply, Hand strap, USB cable, User manual, Power cord, Battery, 128 Mbyte SD Card, QuickReport software

SPECIFICATIONS ARE SUBJECT TO CHANGE WITHOUT NOTICE

©Copyright 2007, FLIR Systems, Inc. All other brand and product names are trademarks of their respective owners.



FLIR Systems AB
 Uitbreidingstraat 60 - 62
 B-2600 Berchem - Belgium
 Tel.: +32 (0)3 287 87 10
 Fax: +32 (0)3 287 87 29
 e-mail: info@flir.be
 www.flirthermography.com

Some images shown in this brochure were taken with a 320 x 240 thermal imager